



Grey Line

INTERIOR | CONTRACTING

JEDDAH, SAUDI ARABIA

BRANCHES | DUBAI, UAE



MMA Advertising Agency



MMA Advertising Agency

www.mmaadvertisingksa.com



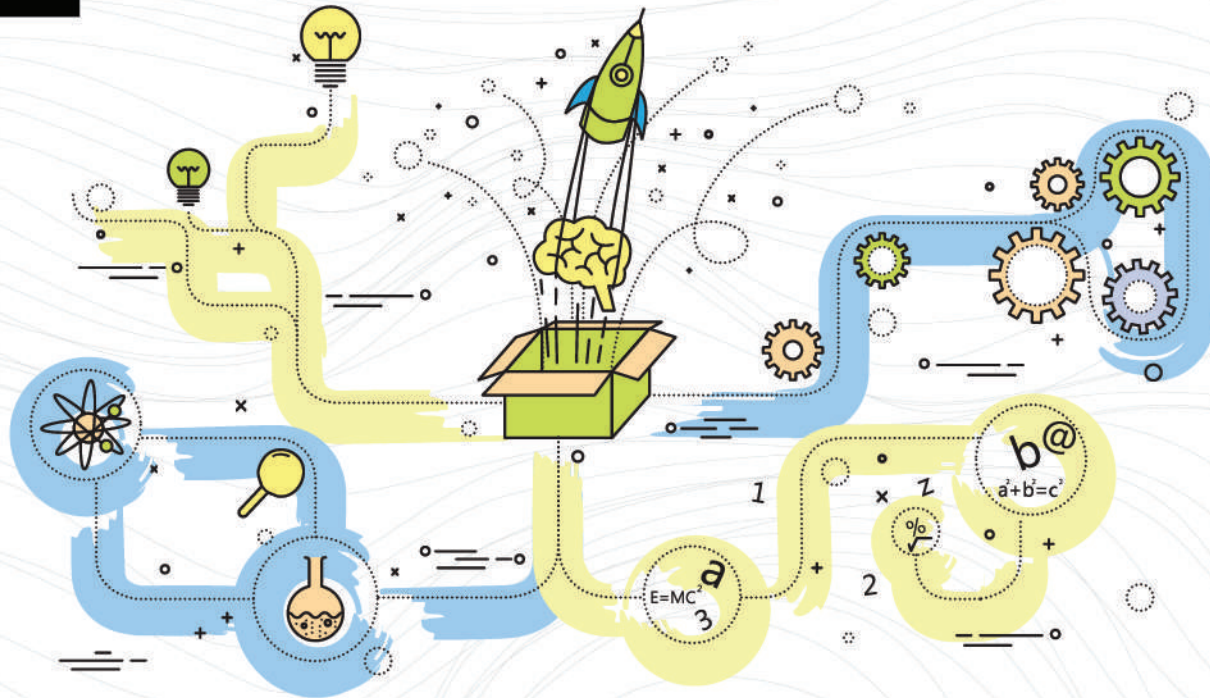
Why Choose Grey Line Advertising ?

Ultimately, we aspire to become your business partners rather than business executives, and to achieve that objective, we introduce you to an ultra-modern definition of the industry – one that's customer-centric, results-oriented, and tailored to your project. With us, you get a glimpse of luxury service, regardless of the size of your project, all with the support of our team members, who are the driving force behind our success.

Company Profile :

Once founded in 2012 as MMA Advertising & Interiors and now rebranded to Greyline Contracting, Greyline is a total solutions for Contracting & Advertising bringing forth all-encompassing construction management solutions from start to finish – from pre-construction to delivery.

With 10+ years of direct, hands-on experience in the field, fast-tracking takes center stage in our services while ensuring the fulfillment of your needs and expectations, on budget and on time having also a branch in UAE since 2016.



The Line That Suits You...

Whether you require strategic brand management to capture the essence of your company or an exciting transformation of your existing brand, we have the people, skills and passion to support you. What's more we can provide you with sparkling marketing materials to support and promote your new look or simply present your established one in a new way.



Vision is the art of seeing what is invisible to others

WHAT WE DO

OUR SERVICES

- ◆ Interior Designing & Contracting
- ◆ Fit out Solutions
- ◆ Exhibition Stand
- ◆ Promotional Display
- ◆ Kiosk Design
- ◆ Bespoke Joinery and Furniture
- ◆ Pylons & Unipoles
- ◆ Signage / Banners and Bill boards
- ◆ Complete Printing solutions
- ◆ Acrylic, Glass, Aluminium & Corian Finishes
- ◆ Metal works
- ◆ Total COVID solutions
- ◆ Promotional Branding
- ◆ 3D Sign and offset printing



The measure of who we are is what we do with what we have



INTERIORS FIT OUT

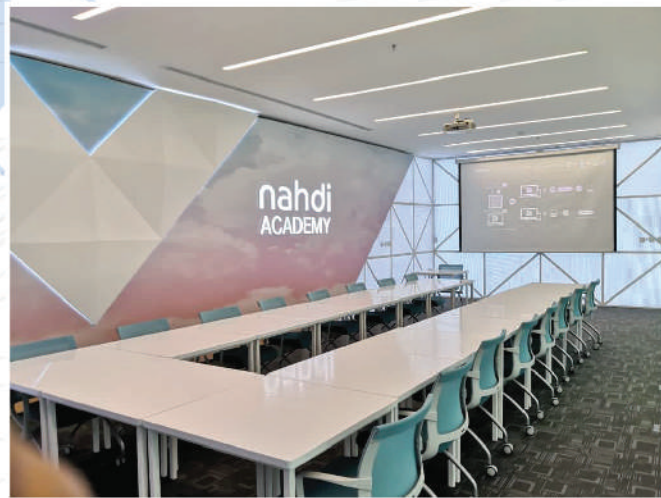
We offer a plethora of design and build services making us your preferred fit out partner for your projects. The spaces are thoughtfully design and immaculately executed to attain aesthetics and functionality.

The solution may be a portable promotional display, a pop up display stand, a banner display or a conference set, meeting, product launch or outdoor event.

Quality, Unique Designs and best project planing are the keystones in all our projects.



Design is not just what it looks like design is how it works.



INTERIORS
FIT OUT





INTERIORS
FIT OUT



CONTRACTING

Grey Line as a Contractor is capable, anytime, of calling upon the best of materials as well as engineering and technical expertise to meet the most stringent international standards required for executing the work assigned.

We undertake and execute all major trades such as Civil, Architectural, Mechanical and Electrical works.



“You can dream, create, design, and build the most wonderful place in the world.
But it requires people to make the dream a reality.”



CONTRACTING





EXHIBITION STAND

We are focused on providing the exhibition needs for stand design and production.
graphaic design promtional kiosk and event strutures.

We empower our team through constant skill upgrades, training and client service
culture.

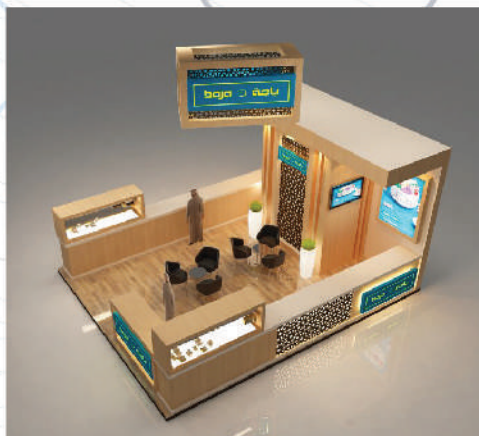
Our vision revolves around offering the best of our services to achieve exeptional
reputation in the exhibit indsustry.



Making art is not the matter of a moment
and nor is making an exhibition



EXHIBITION
STAND





DIGITAL PRINTING

- ◆ Backlit Printing
- ◆ Banners
- ◆ Duratrans
- ◆ Posters
- ◆ Vinyl Printing
- ◆ Canvas
- ◆ Roll-up
- ◆ Pop-up
- ◆ Forex
- ◆ Foam
- ◆ Flags
- ◆ Wall graphics
- ◆ Floor graphics
- ◆ One way vision
- ◆ Mesh banner



Ink is the blood of the printing world



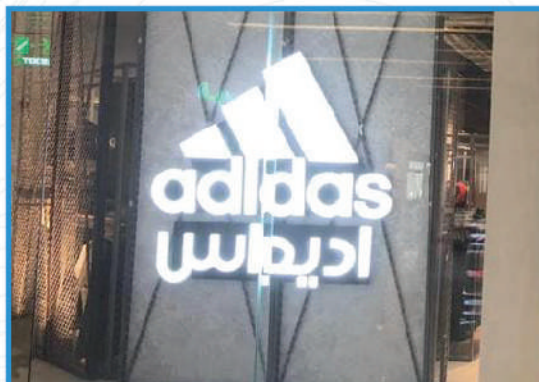


SIGNAGE

- ◆ Channelume signage
- ◆ Halo cut signage
- ◆ Push through letters
- ◆ Aluminum signs
- ◆ SS Letters signs
- ◆ Flex signboard
- ◆ ACP board
- ◆ ACP board with acrylic solid letter
- ◆ Stainless steel etching
- ◆ Foam board signage
- ◆ Forex sheet signage
- ◆ PVC Banner with squared tube frame
- ◆ Flag banner (Fabric)
- ◆ Acrylic sandwich poster
- ◆ Powder coated letters



In a world of change we find our direction through signage

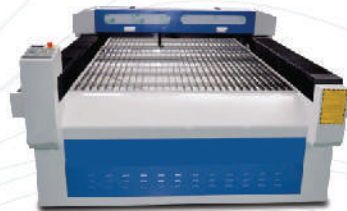


OUR ASSETS

We take pride in our dedicated team of architects, designers and technicians who consistently deliver excellence beyond expectations.

Our full fledged workshop in Al Qusais, Dubai equipped with the latest machineries caters to all our requirements.

- ◆ Indoor & Outdoor Digital Printing Machine Up to 3.20 Meters.
- ◆ Indoor & Outdoor Digital Printing Machine Up to 1.60 Meters.
- ◆ CNC Laser Machine Full Bed Cuts upto 20mm Acrylic & Up to 1.2mm Stainless Steel Mirror Finish & Brush Finish.
- ◆ CNC Router Full Bed Cuts all types of Wooden & Aluminum material in any design.
- ◆ Mimaki Plotter Cut Up to 1.60 meters.
- ◆ Lamination Machine Up to 1.60 meters.



You don't build a business; you build people and then people build the business

OUR CLIENTS

 **LANDMARK GROUP**



athlete's co.

BEVERLY HILLS  POLO CLUB

Bottega Verde
NATURA ITALIANA

 **SKECHERS**
World Famous



INGLOT

BIRKENSTOCK



UFS
UNITED FOOD SERVICES



 **NAUTICA**



A satisfied customer is the best business strategy of all

KSA BRANCH:



INTERIOR | CONTRACTING

+966 126 396030 +966 59 552 0075

info@mmaadvertisingksa.com

www.mmaadvertisingksa.com

Jeddah - Al Guwaiza Dist.
Near Souq.com Warehouse

UAE BRANCH:



INTERIOR | ADVERTISING

+971 4 297 4929 +971 55 194 3138

info@greylineadvertisinguae.com

Shed No. 3 - PTC Warehouses
Al Qusais Industrial Area 1
Opp. Ministry of Labour Dubai - U.A.E.

Previously Known as



MMA ADVERTISING & INTERIORS

www.mmaadvertisingksa.com